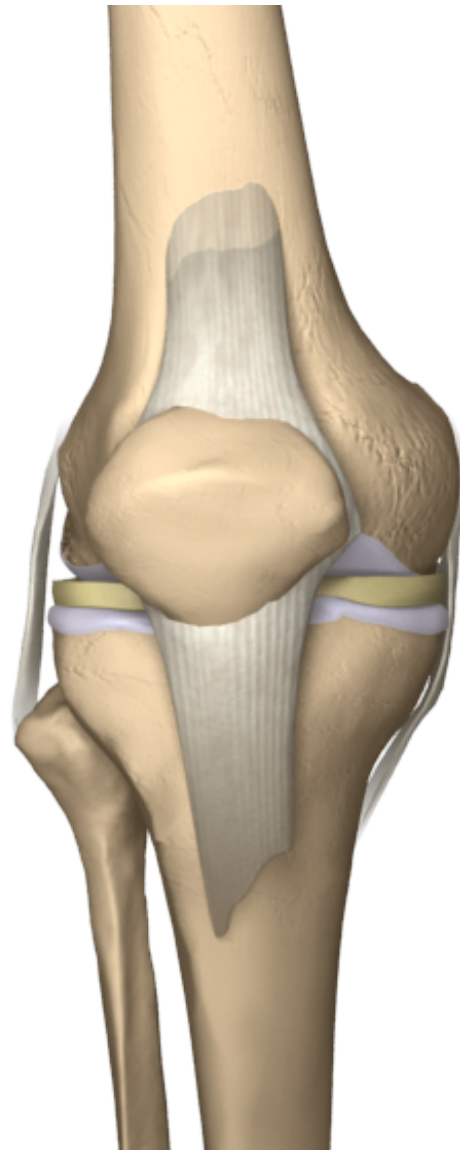
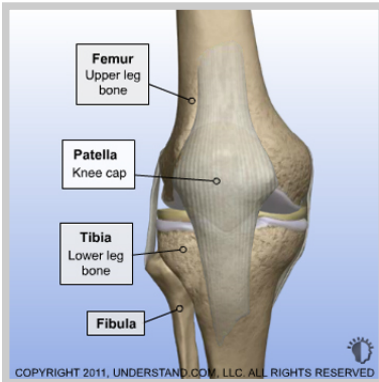


Diagnostic Knee Arthroscopy

Arthroscopic surgery allows diagnosis and treatment of joint problems through small incisions in the skin. A camera attached to a scope is used to see inside your joint.



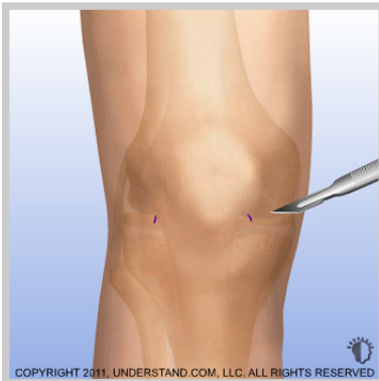


Diagnostic Arthroscopy Introduction

Arthroscopic surgery allows diagnosis and treatment of joint problems through small incisions in the skin. A camera attached to a scope is used to see inside your joint.

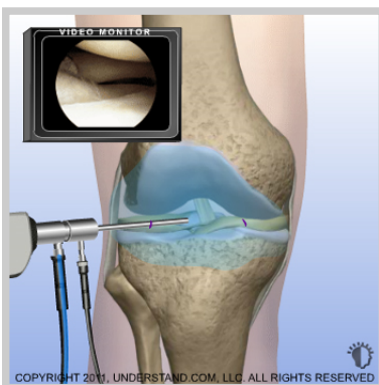
Doctor's Personal Note: A Message From Dr. Pevny

Thank you for visiting my website and viewing the 3D Animation Library. These animations should assist you in better understanding your condition or procedure. I look forward to answering any additional questions you may have. Please make an appointment by calling (970) 544-1289.



Incision

Small incisions (portals) are made around the joint. The scope and surgical instruments will go into these incisions.



Visualization

The scope is inserted into the knee. Saline solution flows through a tube (cannula) and into the knee to expand the joint and to improve visualization. The image is sent to a video monitor where the surgeon can see inside the joint.



Diagnosis

Using the video monitor as a guide, the surgeon can make a diagnosis. A variety of surgical instruments like this probe can be inserted through other incisions to treat specific problems.



End Of Procedure

The surgical instruments are removed and the procedure is completed.