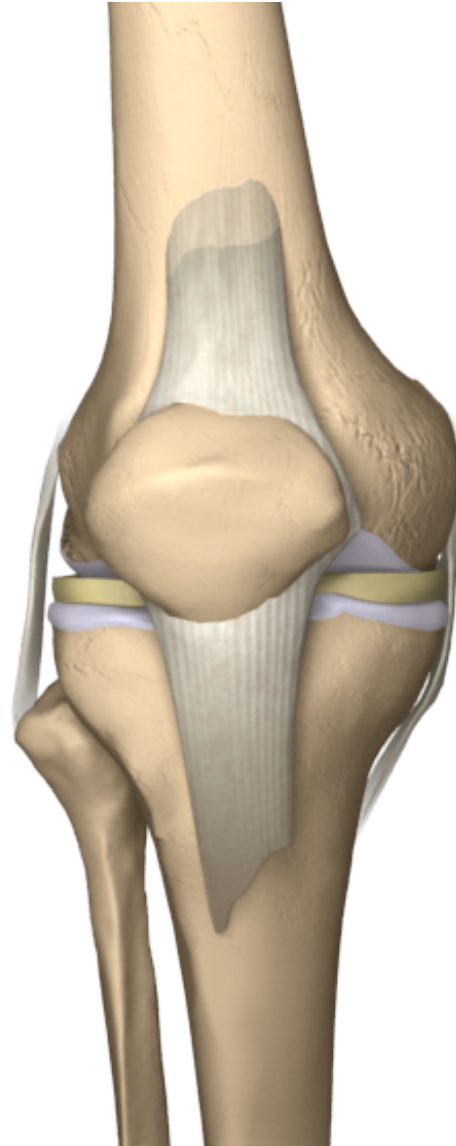
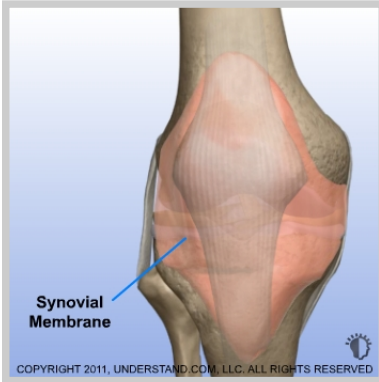


Synovial Problems - Removal of Inflamed Synovium

The synovium membrane is found in joints like your knee and shoulder. This thin membrane surrounds the inner lining of your joint and may have folds and fringes. Its main function is to create synovial fluid which helps nourish and lubricate your joint.



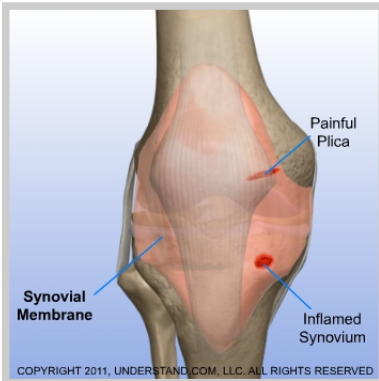


Removal of Inflamed Synovium Introduction

The synovium membrane is found in joints like your knee and shoulder. This thin membrane surrounds the inner lining of your joint and may have folds and fringes. Its main function is to create synovial fluid which helps nourish and lubricate your joint.

Doctor's Personal Note: A Message From Dr. Pevny

Thank you for visiting my website and viewing the 3D Animation Library. These animations should assist you in better understanding your condition or procedure. I look forward to answering any additional questions you may have. Please make an appointment by calling (970) 544-1289.



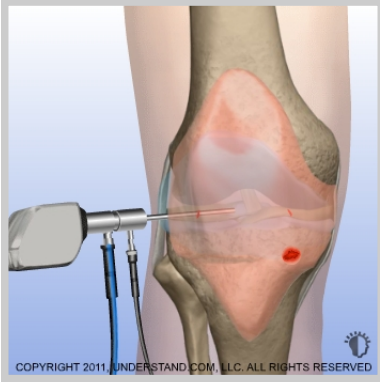
Synovial Problems

When part of your synovium becomes inflamed, it can cause your entire joint to swell and become tender. Your plica is a fold within the synovium that is located near the knee cap. When your knee cap glides back and forth, it can pinch the plica causing pain.



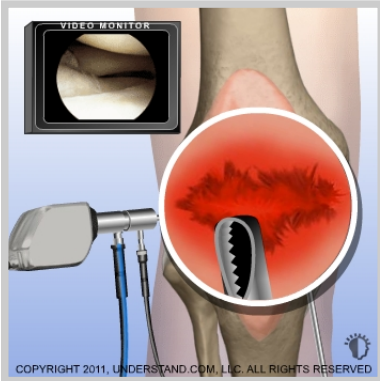
Incisions

Small incisions (portals) are made around the joint. The scope and surgical instruments will go into these incisions.



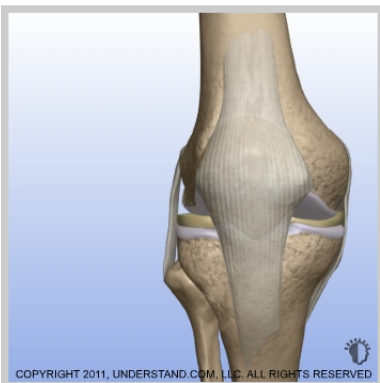
Visualization

The scope is inserted into the knee. Saline solution flows through a tube (cannula) and into the knee to expand the joint and to improve visualization. The image is sent to a video monitor where the surgeon can see inside the joint.



Removal

A specialized surgical instrument is used to remove the inflamed synovium.



End of Procedure

After the removal is finished, the surgical instruments are removed and the procedure is completed.